

REDMOND, OREGON

AL-345 (FAA)

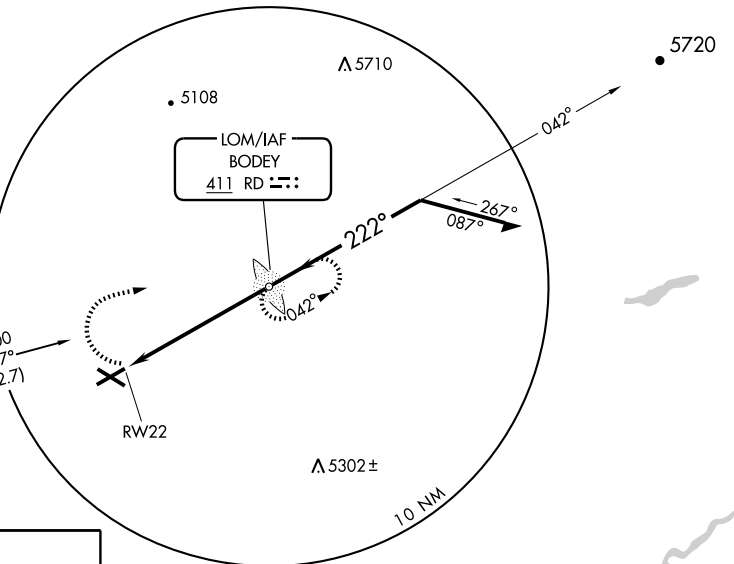
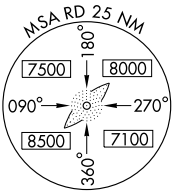
# NDB or GPS RWY 22

REDMOND/ROBERTS FIELD (RDM)

LOM RD <b>411</b>	APP CRS <b>222°</b>	Rwy Idg TDZE Apt Elev	<b>7040</b> <b>3062</b> <b>3077</b>
----------------------	------------------------	-----------------------------	---

MALSR AS5	MISSED APPROACH: Climbing right turn to 6500 direct RD LOM and hold.			
	ASOS <b>119.025</b>	SEATTLE CENTER <b>128.15 257.75</b>	REDMOND TOWER* <b>124.5 (CTAF) 1</b>	GND CON <b>121.8</b>

ASOS <b>119.025</b>	SEATTLE CENTER <b>128.15 257.75</b>	REDMOND TOWER* <b>124.5 (CTAF) 1</b>	GND CON <b>121.8</b>	UNICOM <b>122.95</b>
------------------------	--	---	-------------------------	-------------------------

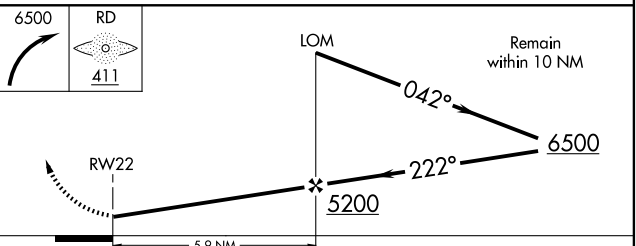
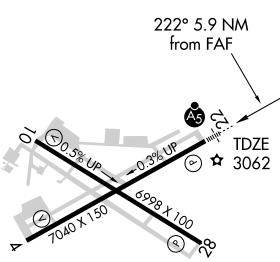


4101

6500  
0.57°  
(12.7)

DESCHUTES  
117.6 DSD  
Chan 123

ELEV 3077



REIL Rwy 4, 10 and 28

HIRL Rwy 4-22

MIRL Rwy 10-28

FAF to MAP 5.9 NM

Knots	60	90	120	150	180
Min:Sec	5:54	3:56	2:57	2:22	1:58

CATEGORY	A	B	C	D
S-22	3520-3/4 458 (500-3/4)			3520-1 1/4 458 (500-1 1/4)
CIRCLING	3540-1 463 (500-1)		3640-1 1/2 563 (600-1 1/2)	3640-2 563 (600-2)

REDMOND, OREGON  
Amdt 1 06103

44°15'N-121°09'W

# REDMOND/ROBERTS FIELD (RDM) NDB or GPS RWY 22

NW-1, 11 MAY 2006 to 08 JUN 2006

NW-1, 11 MAY 2006 to 08 JUN 2006